

DONATE

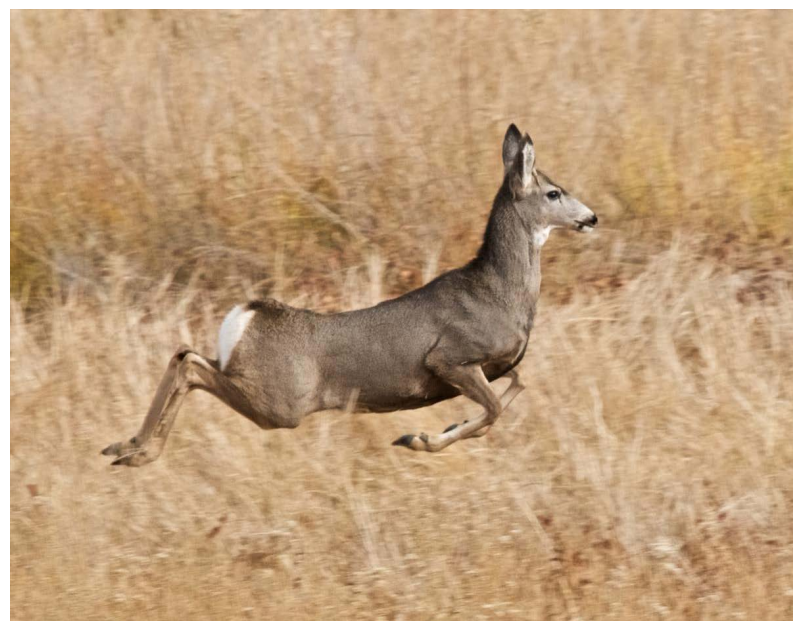
Updates: Reception and Frequencies

[Natural Resources & Energy](#) and [UW Highlights](#)

New Fencing Eases Migration Route For Mule Deer

By COOPER MCKIM • OCT 6, 2017

[Tweet](#) [Share](#) [Google+](#) [Email](#)



Stotting mule deer. Seen at Pahrnagat National Wildlife Refuge, Nevada.

CREDIT STEVEN FINE

Mule deer can migrate a little bit easier starting this year thanks to new fencing along their migration route.

Wyoming's Game and Fish Department replaced old livestock fencing this summer with the help of several partners including the Wyoming Wildlife and Natural Resource Trust Fund, Upper Green Muley Fanatics, Jonah Energy, and the Conservation Fund.

Mule deer migrate from Hoback, south of Jackson, to the Red Desert every year. It allows them to get the best vegetation and find the safest areas to raise fawns.

"Between Pinedale and Fremont lake is kind of a pinch point, bottleneck in that migration corridor," said Mark Gocke, a spokesman for Wyoming's Game and Fish Department.

"This property is in this key property for the migration. So, protecting that land and having it not be developed is crucial for what's determined to be the longest migration corridor in the lower 48 states," said Gocke.

There used to be old livestock fences in this critical 364-acre area that could entangle a deer trying to move through it. Gocke explained volunteers helped install *new* fencing this summer that allows deer to more easily move along their route.

“So that when animals jump over the barbed wire fence they don’t get entangled in it with their legs.” Gocke said, “and then also having the bottom wire up higher so that other animals can go under the bottom wire easily.” University of Wyoming has called this bottleneck point the most threatened portion of the migration route. The mule deer migration route is one of the largest big-game migration routes in North America.

TAGS: PINEDALE MULE DEER FENCING FENCES WILDLIFE WYOMING GAME AND FISH DEPARTMENT

 [Tweet](#)  [Share](#)  [Google+](#)  [Email](#)

Wyoming Public Media Comment Policy

Use your real name. Write with civility & don't attack others. Be clear and concise. Stay on topic. Please read our [Comment Policy](#) before commenting.

0 Comments Wyoming Public Media

[Login](#) ▾

[Recommend](#) [Share](#)

[Sort by Best](#) ▾



Start the discussion...

Be the first to comment.

[Subscribe](#)  [Add Disqus to your site](#) [Privacy](#)



RELATED CONTENT

Scientists Regroup After Winterkill Wipes Out Mule Deer Herd Fawns

AUG 4, 2017



Mule Deer Steer Clear Of Energy Development, Losing Habitat

JUN 30, 2017



Winter Hits Mule Deer Fawns And Does Especially Hard

MAY 26, 2017

Winterkill In Western Wyoming Shrinks Herd Numbers

MAY 15, 2017



Wildlife Advocates Say Reversing Clean Power Act Will Hurt Species

MAR 30, 2017

Our Partners



